



With its slim, innovative design, high user-friendliness, versatility and long service life, the SC 6 series with its 4-cylinder technology sets standards for quality and economy. Its very compact design, despite the large opening travel, allows ergonomic working. The long base jaws enable the SC 6 to crimp short 90° fittings up to 2" 4 SP, and the SC 6 S up to 2" R 15. The proven greaseless slide bearing technology reduces maintenance costs, extends service life and increases accuracy. Because the 4-cylinder technology keeps press waste away from the dies, UNIFLEX offers a 3-year warranty for the SC 6 and SC 6 S series.



SC 6




SC 6 Ecoline C.2



SC 6 Ecoline



SC 6 Ecoline      SC 6      SC 6 S Ecoline      SC 6 S

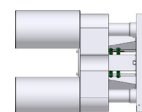
Technical Data	SC 6 Ecoline	SC 6	SC 6 S Ecoline	SC 6 S	Type of dies																																																																																																												
Crimp force (kN/Ton)	2,000/200	2,000/200	2,800/280	2,800/280	 <b>239-xx-Ø-yy 266</b>																																																																																																												
No grease: 20% less friction	✓	✓	✓	✓		<table border="1"> <thead> <tr> <th>Ø mm</th> <th>mm</th> <th>mm</th> </tr> </thead> <tbody> <tr><td>6.8</td><td>65</td><td></td></tr> <tr><td>9</td><td>65</td><td></td></tr> <tr><td>10</td><td>65</td><td></td></tr> <tr><td>12</td><td>65</td><td></td></tr> <tr><td>14</td><td>65</td><td></td></tr> <tr><td>16</td><td>65</td><td></td></tr> <tr><td>17</td><td>65</td><td></td></tr> <tr><td>19</td><td>65</td><td></td></tr> <tr><td>20</td><td>65</td><td></td></tr> <tr><td>22</td><td>65</td><td></td></tr> <tr><td>24</td><td>65</td><td></td></tr> <tr><td>26</td><td>65</td><td></td></tr> <tr><td>28</td><td>80</td><td></td></tr> <tr><td>30</td><td>80</td><td></td></tr> <tr><td>31</td><td>80</td><td></td></tr> <tr><td>32</td><td>80</td><td></td></tr> <tr><td>34</td><td>80</td><td></td></tr> <tr><td>36</td><td>80</td><td></td></tr> <tr><td>38</td><td>80</td><td></td></tr> <tr><td>39</td><td>80</td><td></td></tr> <tr><td>40</td><td>80</td><td></td></tr> <tr><td>44</td><td>80</td><td></td></tr> <tr><td>47</td><td>100</td><td></td></tr> <tr><td>50</td><td>100</td><td></td></tr> <tr><td>54</td><td>100</td><td></td></tr> <tr><td>57</td><td>100</td><td></td></tr> <tr><td>62</td><td>100</td><td>110</td></tr> <tr><td>67</td><td></td><td>110</td></tr> <tr><td>71</td><td></td><td>110</td></tr> <tr><td>74</td><td></td><td>110</td></tr> <tr><td>78</td><td></td><td>110</td></tr> <tr><td>84</td><td></td><td>110</td></tr> <tr><td>86</td><td></td><td>110</td></tr> <tr><td>92</td><td></td><td>110</td></tr> <tr><td>94</td><td></td><td>110</td></tr> </tbody> </table>	Ø mm	mm	mm	6.8	65		9	65		10	65		12	65		14	65		16	65		17	65		19	65		20	65		22	65		24	65		26	65		28	80		30	80		31	80		32	80		34	80		36	80		38	80		39	80		40	80		44	80		47	100		50	100		54	100		57	100		62	100	110	67		110	71		110	74		110	78		110	84		110	86		110	92		110	94	
Ø mm	mm	mm																																																																																																															
6.8	65																																																																																																																
9	65																																																																																																																
10	65																																																																																																																
12	65																																																																																																																
14	65																																																																																																																
16	65																																																																																																																
17	65																																																																																																																
19	65																																																																																																																
20	65																																																																																																																
22	65																																																																																																																
24	65																																																																																																																
26	65																																																																																																																
28	80																																																																																																																
30	80																																																																																																																
31	80																																																																																																																
32	80																																																																																																																
34	80																																																																																																																
36	80																																																																																																																
38	80																																																																																																																
39	80																																																																																																																
40	80																																																																																																																
44	80																																																																																																																
47	100																																																																																																																
50	100																																																																																																																
54	100																																																																																																																
57	100																																																																																																																
62	100	110																																																																																																															
67		110																																																																																																															
71		110																																																																																																															
74		110																																																																																																															
78		110																																																																																																															
84		110																																																																																																															
86		110																																																																																																															
92		110																																																																																																															
94		110																																																																																																															
Control	Control A	Control A	Control A	Control A																																																																																																													
SAE R 15*/4SH 1 piece fitting	2"	2"	2"	2"																																																																																																													
4 SH* 2 piece fitting	2"	2"	2"	2"																																																																																																													
SAE R 15* 2 piece fitting	1½"	1½"	2"	2"																																																																																																													
Industrial	3"	3"	3"	3"																																																																																																													
90° Elbows	2"	2"	2"	2"																																																																																																													
Crimp range (mm/inch)	102 / 4.02	102 / 4.02	102 / 4.02	102 / 4.02																																																																																																													
Opening (mm/inch)	+45 / +1.77	+45 / +1.77	+45 / +1.77	+45 / +1.77																																																																																																													
Opening without dies (mm/inch)	147 / 5.78	147 / 5.78	147 / 5.78	147 / 5.78																																																																																																													
Master dies length (mm/inch)	110 / 4.33	110 / 4.33	110 / 4.33	110 / 4.33																																																																																																													
Type of dies	239 - xx/266 **	239 - xx/266 **	239 - xx/266 **	239 - xx/266 **																																																																																																													
Speed (mm/sec)																																																																																																																	
Close	4.9	9.7	3.0	6																																																																																																													
Crimp	2.3	2.2	1.4	1.4																																																																																																													
Open	8.2	16	5.3	13.3																																																																																																													
Noise level	69 dBA	67 dBA	69 dBA	67 dBA																																																																																																													
Drive	4 kW 3 VAC	4 kW 3 VAC	4 kW 3 VAC	4 kW 3 VAC																																																																																																													
Oil	50 l	70 l	50 l	70 l																																																																																																													
L x W x H (mm)	700 x 600 x 735	745 x 600 x 1360	700 x 600 x 735	745 x 600 x 1,360																																																																																																													
Weight	275 kg	375 kg	315 kg	415 kg																																																																																																													
<b>Options</b>																																																																																																																	
12 VDC/24 VDC	✓	-	✓	-																																																																																																													
1 Phase	✓	✓	✓	✓																																																																																																													
Control C.2/IPC	✓	✓	✓	✓																																																																																																													

\* According to the fitting.      \*\* Without intermediate dies.  
 Packages page 28 / Accessories and options page 56

## Description



The S 6 series can be used to crimp short 90° elbow fittings with a long drop. This is impossible for other conventional machines.



SC = Press tool with Cylinder