



Due to their narrow and innovative construction, high level of user friendliness and long service life, the SH 6 series set new standards for quality and cost effectiveness. Their large opening +43 mm (+ 1.69") and light weight 172 kg make it the perfect machine for mobile application up to 2" 4 SP and 3" return line.

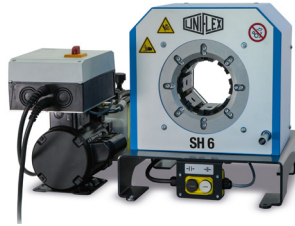
The use of long master dies allows you to crimp 90° elbow fittings up to 2" with the tried and tested greaseless slide bearing technology, which reduces maintenance costs and increases the product quality.



SH 6 Ecoline



SH 6 Mobileline



SH 6 Ecoline	SH 6 Mobileline	SH 6 S Ecoline	SH 6 S Mobileline
--------------	-----------------	----------------	-------------------

Technical Data	SH 6 Ecoline	SH 6 Mobileline	SH 6 S Ecoline	SH 6 S Mobileline
Crimp force (kN/Ton)	2,400/240	2,400/240	2,800/280	2,800/280
No grease: 20% less friction	✓	✓	✓	✓
Control	Control A	Control A	Control A	Control A
SAE R 15*/4SH 1 piece fitting	2"	2"	2"	2"
4 SH* 2 piece fitting	2"	2"	2"	2"
SAE R 15* 2 piece fitting	1½"	1½"	2"	2"
Industrial	3"	3"	3"	3"
90° Elbows	2"	2"	2"	2"
Crimp range (mm/inch)	102 / 4.02	102 / 4.02	102 / 4.02	102 / 4.02
Opening (mm/inch)	+43 / +1.69	+43 / +1.69	+43 / +1.69	+43 / +1.69
Opening without dies (mm/inch)	145 / 5.71	145 / 5.71	145 / 5.71	145 / 5.71
Master dies length (mm/inch)	110 / 4.33	110 / 4.33	110 / 4.33	110 / 4.33
Type of dies	239 - xx/266 **	239 - xx/266 **	239 - xx/266 **	239 - xx/266 **
Speed (mm/sec)				
Close	30/1.8	10/0.5	30/1.8	10/0.5
Crimp	1.8	0.5	1.8	0.5
Open	10.6/30	3/30	10.6/30	3/30
Noise level	69 dBA	69 dBA	69 dBA	69 dBA
Drive	3 kW 3 VAC	1.8 kW 1 VAC	3 kW 3 VAC	1.8 kW 1 VAC
Oil	35 l	4 l	35 l	4 l
L x W x H (mm)	600 x 550 x 750	505 x 430 x 490	709 x 613 x 691	505 x 621 x 573
Weight	196 kg	172 kg	206 kg	182 kg
Options				
12 VDC/24 VDC	-	✓	-	✓
1 Phase	✓	✓	✓	✓
Control C.2/IPC	✓	-	✓	-

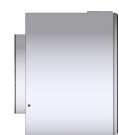
Type of dies		
Ø mm	mm	mm
239-xx-Ø-yy 266		
6.8	65	
9	65	
10	65	
12	65	
14	65	
16	65	
17	65	
19	65	
20	65	
22	65	
24	65	
26	65	
28	80	
30	80	
31	80	
32	80	
34	80	
36	80	
38	80	
39	80	
40	80	
44	80	
47	100	
50	100	
54	100	
57	100	
62	100	110
67		110
71		110
74		110
78		110
84		110
86		110
92		110
94		110

* According to the fitting. ** Intermediate dies not required.
 Packages page 28 / Accessories and options page 56

Description



The 12 VDC/24 VDC units offer space- and weight-saving application options, e.g. for fitting service trucks.



SH = Hollow piston press tool