

# UNIJOIN<sup>®</sup>

A UNIFLEX-Hydraulik Brand

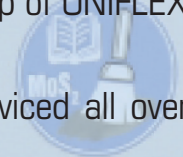
## Greased Crimper Program

### Why Grease?

For beginners, one-time users, small workshops, etc., these crimpers, which afford you the quality and precision UNIFLEX machines are renowned for, are just one step away from a greaseless crimper.

With UNIJOIN, UNIFLEX is re-introducing a high-tolerance crimper using older technology that is commonly used in the market today. UNIFLEX is offering these crimpers of the highest quality as a way to support and help you grow your business and connect you to the full line-up of UNIFLEX products.

All of the products in this leaflet are made in Germany, and sold and serviced all over the world through our UNIFLEX branches.



**UNIFLEX.de**

made in Germany



#### GERMANY

UNIFLEX-Hydraulik GmbH  
Robert-Bosch-Strasse 50-52  
61184 Karben/Germany

+49 60 399 171 0  
+49 60 399 1711 181  
+49 174 7641 526  
sales@uniflex.de

#### USA

UNIFLEX of America LLC  
1088 National Parkway  
60173 Schaumburg, IL/USA

+1 847 519 11 00  
+1 847 519 11 04  
sales@uniflex.de

#### URUGUAY

UNIFLEX Latin America Srl  
Saint Bois 5074  
Free zone Stock  
Montevideo, UY 12000/Uruguay

+598 2 7120 660 ext. 1115  
+598 2 7120 660 ext. 2101  
sales@uniflex.de

#### INDIA

Uniflex Hose Assembly Machines India  
Pvt. Ltd.  
Plot No. 588/627, Rect.No. 33, Kila No. 19  
Pataudi Road, Kadipur Industrial Area  
122001 Gurgaon India

+91 91 7982219100  
+91 99 11224090  
+91 91 7982219100  
dinesh.kumar(at)  
uniflex.de

#### CHINA

UNIFLEX-Hydraulik Trading (Shanghai)  
Co.  
South 2 Warehouse, Building 1  
No. 500 Jianyun Road  
Zhoupu Town, Pudong New Area  
Shanghai CN 201318/China

+86 21 5032 7022  
sales@uniflex.de

#### SINGAPORE

UNIFLEX-Hydraulik  
Asia Pacific Pte. Ltd.  
No. 51 Bukit Batok Crescent #07-25  
658077 Singapore

+65 68 96 67 95  
+65 68 96 64 28  
sales@uniflex.de

#### JAPAN

UNIFLEX JAPAN  
Representative office  
1-20-3 Nishishinjuku, Shinjuku-ku  
8F, Nishishinjuku Takagi Bldg.  
Tokyo, JP 160-0023  
Japan

+81 3 6890 3386  
sales@uniflex.de

#### RUSSIA


Via partner company:  
Hydraulics-Engineering-Services LLC  
Ryabinina 31, Entrance 182  
620149 Yekaterinburg  
Sverdlovsk Oblast  
Russian Federation

+7 343 227 88 83  
sales@uniflex.de



UG 16 Ecoline

Technical data	UG 16 Ecoline
Crimp force (kN / Ton)	900/90
Greased machine	✓
Control	Control A
SAE R 12 / 4SH 1 piece fitting *	1"
SAE R15 / 4SH 2 piece fitting *	¾"
SAE R12 / 4SP 2 piece fitting *	1"
Industrial	1 ¼"
90° Elbows	1"
Crimp range	63 mm**
Opening	+ 22 mm
Opening without dies	77 mm
Master dies length (mm)	75 mm
Type of dies	263
Drive	manual
Oil	0,75 L
L x W x H (mm)	218 x 165 x 352
Weight	29 kg

Type of dies	
 <b>263</b>	
Ø mm	mm
6,8	40
9	75
12	75
14	75
17	75
20	75
24	75
28	75
32	75
36	75
40	75
44	75
47	75

\* According to the fitting.

\*\* With master dies.

We reserve the right to make technical changes without notice. Options are machine parts that can only be ordered while buying the machine.

## Package



QDS 263 B

UG 16 Ecoline:

UG 16 Ecoline Package = Machine

+ PB Ø 17, 20, 24

+ QDS 26X B

## Additional Information

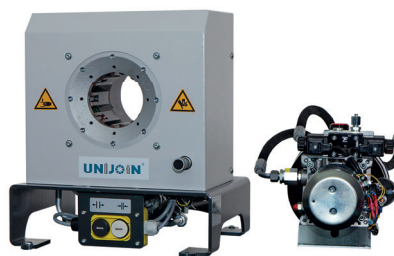


An optical signal is given when the crimp measure is reached. The electric and pneumatic variants have an automatic stop function.



Telescopic hand-lever included.





UG 20 Ecoline

UG 20 Mobileline

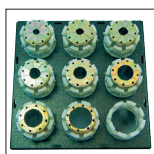
Technical data	UG 20 Ecoline	UG 20 Mobileline
Crimp force (kN / Ton)	190	190
Greased machine	✓	✓
Control	Control A	Control A
SAE R 12 / 4SH 1 piece fitting *	1 ¼"	1 ¼"
SAE R15 / 4SH 2 piece fitting *	1 ¼"	1 ¼"
SAE R12 / 4SP 2 piece fitting *	1 ½"	1 ½"
Industrial	2"	2"
90° Elbows	1 ¼"	1 ¼"
Crimp range	70 mm	70 mm
Opening	+ 27 mm	+ 27 mm
Opening without dies	97 mm	97 mm
Master dies length (mm)	100 mm	100 mm
Type of dies	239-xx-Ø	239-xx-Ø
Speed (mm/sec)		
Close	2,0	1,5
Crimp	2,0	0,4
Open	7,6	5,7
Noise level	69 dBA	69 dBA
Drive	3 kW	1,8 kW
Oil	35 L	4 L
L x W x H (mm)	600 x 550 x 630	430 x 370 x 440
Weight	150 kg	110 kg
<b>Options</b>		
12 VDC / 24 VDC	-	✓
1-Phase	✓	✓
3-Phase	✓	-

\* According to the fitting

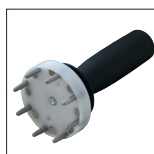
Type of dies	
	<b>239-xx-Ø-yy</b>
Ø mm	-mm-
6,8	50
9	50
10	50
12	65
14	65
16	65
17	65
19	65
20	65
22	65
24	65
26	65
28	80
30	80
31	80
32	80
36	80
38	80
39	80
40	80
44	80
47	100
50	100
54	100
57	100
62	100

We reserve the right to make technical changes without notice. Options are machine parts that can only be ordered while buying the machine.

## Package



QDS 239 B



QDC 239.5

- Package = Machine  
 + PB Ø 17, 20, 24, 28, 32, 40, 44, 50  
 + QDC 239.5  
 + QDS 239 B





UG 32 Mobileline



UG 32 Ecoline



UG 32 S

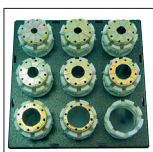
Technical data	UG 32 Mobileline	UG 32 Ecoline	UG 32 S
Crimp force (kN / Ton)	250	250	350
Greased machine	✓	✓	✓
Control	Control A	Control A	Control A
SAE R 15 / 4SH 1 piece fitting *	2"	2"	2"
SAE R15 / 4SH 2 piece fitting *	1 ½"	1 ½"	2"
SAE R12 / 4SP 2 piece fitting *	2"	2"	2"
Industrial	3"	3"	3"
90° Elbows	2"	2"	2"
Crimp range	100 mm	100 mm	102 mm
Opening	+ 41 mm	+ 41 mm	+40 mm
Opening without dies	143 mm	143 mm	143 mm
Master dies length (mm)	110 mm	110 mm	110 mm
Type of dies	239 - xx / 266	239 - xx / 266	239 - xx / 266
Speed (mm/sec)			
Close	20/1,1	30/1,5	30/2,3
Crimp	0,3	1,5	1,1
Open	6,5/30	8,7/30	15,4/30
Noise level	69 dBA	69 dBA	69 dBA
Drive	1,8 kW	3 kW	4 kW
Oil	4 L	35 L	50 L
L x W x H (mm)	505 x 430 x 490	600 x 550 x 750	700 x 550 x 710
Weight	145 kg	190 kg	260 kg
<b>Options</b>			
12 VDC / 24 VDC	✓	-	-
1 Phase	✓	✓	✓
3 Phase	-	✓	✓

\* According to the fitting. \*\* Intermediate dies not required.

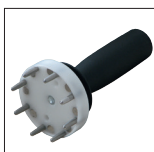
Type of dies		
Ø mm	-mm-	-mm-
6,8	50	
9	50	
10	50	
12	65	
14	65	
16	65	
17	65	
19	65	
20	65	
22	65	
24	65	
26	65	
28	80	
30	80	
31	80	
32	80	
36	80	
38	80	
39	80	
40	80	
44	80	
47	100	
50	100	
54	100	
57	100	
62	100	110
67		110
71		110
74		110
78		110
84		110
86		110
92		110

We reserve the right to make technical changes without notice. Options are machine parts that can only be ordered while buying the machine.

## Package



QDS 239 B



QDC 239.5

Package = Machine

+ PB Ø 17, 20, 24, 28, 32, 40, 44, 50, 57, 71

+ 266.239L

+ QDC 239.5

+ QDS 239 B

