



Due to their narrow and innovative construction, high level of user friendliness and long service life, the SH 10 and SH 10 XL set new standards for quality and cost effectiveness. Their large opening, + 45 mm (+ 1.77") for SH 10 and +61 mm (+ 2.40") for S 10 XL, fits industrial hoses with large flanges.

The use of long master dies allows you to crimp 90° elbow fittings up to 2" with the tried and tested greaseless slide bearing technology, which reduces maintenance costs and increases the product quality.



SH 10 XL



SH 10 Ecoline



SH 10 C.2



SH 10 Ecoline

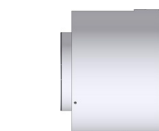
SH 10

SH 10 XL Ecoline

SH 10 XL

Technical Data	SH 10 Ecoline	SH 10	SH 10 XL Ecoline	SH 10 XL
Crimp force (kN / Ton)	2,800/280	2,800/280	2,800/280	2,800/280
No grease: 20% less friction	✓	✓	✓	✓
Control	Control A	Control A	Control A	Control A
SAE R 15*/4SH 1 piece fitting	2"	2"	2"	2"
4 SH* 2 piece fitting	2"	2"	2"	2"
SAE R 15* 2 piece fitting	2"	2"	2"	2"
Industrial	4"	4"	4"	4"
90° Elbows	2"	2"	2"	2"
Max. Crimp range (mm/inch)	145 / 5.70	145 / 5.70	145 / 5.70	145 / 5.70
Opening (mm/inch)	+45 / +1.77	+45 / +1.77	+61 / +2.40	+61 / +2.40
Opening without dies (mm/inch)	190 / 7.48	190 / 7.48	200 / 7.87	200 / 7.87
Master dies length (mm/inch)	126 / 4.96	126 / 4.96	126 / 4.96	126 / 4.96
Type of dies	239 - xx/237 L **	239 - xx/237 L **	239-xx-Ø/237 L **	239-xx-Ø/237 L **
Speed (mm/sec)				
Close	4.8	6.1	30/6.0	30/6.0
Crimp	2.3	1.7	1.4	1.4
Open	7.9	10.3	30/17	30/17
Noise level	70 dBA	67 dBA	67 dBA	70 dBA
Drive	4 kW 3 VAC	5.5 kW 3 VAC	4 kW 3 VAC	5.5 kW 3 VAC
Oil	70 l	70 l	70 l	70 l
L x W x H (mm)	700 x 600 x 845	690 x 600 x 1.400	700 x 600 x 845	690 x 600 x 1,400
Weight	372 kg	390 kg	390 kg	430 kg
Options				
Control C.2/IPC	✓	✓	✓	✓
1 Phase	✓	✓	✓	✓
12 VDC/24 VDC	✓	-	✓	-

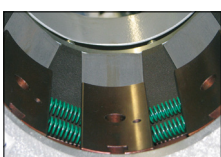
Type of dies		Type of dies	
Ø mm	mm	Ø mm	mm
6.8	65	54	118
9	65	57	118
10	65	62	118
12	65	67	118
14	65	71	118
16	65	74	118
17	65	78	118
19	65	84	118
20	65	86	118
22	65	90	118
24	65	96	118
26	65	103	118
28	80	106	126
30	80	111	126
31	80	116	126
32	80	121	126
34	80	126	126
36	80	131	126
38	80	135	126
39	80	137	126
40	80		
44	80		
47	100		
50	100		
54	100		
57	100		
62	100		



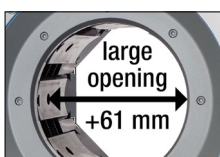
SH = Hollow piston press tool

* According to the fitting. ** Intermediate dies not required.
 Packages page 28 / Accessories and options page 56

Description



The SH 10 and SH 10 XL-series is fitted with the clean slide bearing technology.



The SH 10 XL offers a large opening travel of up to 61 mm.



ICC – Industrial (hose) Crimp Calculator (with C.2 and IPC controller)

Automatically calculate your crimp diameter directly from your hose and fitting measurement based on compression. Includes the official agreed, tested and approved industrial hose crimp calculator/Interface with fitting and ferrule data from Mario, PT, Campbell and Dixon.