



Due to its narrow, innovative construction, high level of user friendliness, and long service life, the SH 7 sets the standard for quality and cost effectiveness. Balanced weight (2" / 77 kg) and compact engineered design make the SH 7 perfect for workshops and on-site service as well as a service or reserve press for quick use. The proven greaseless slide bearing technology with quick-change system reduces maintenance costs, extends service life and increases accuracy.



SH 7



Quick insertion of the jaws



SH 7 with closed dies and DCL



NEW



SH 7

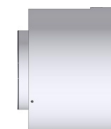
SH 7 S

NEW

Technical Data	SH 7	SH 7 S
Crimp force (kN/Ton)	2,400/240	3,200/320
No grease: 20% less friction	✓	✓
Control	Control A	Control A
SAE R 15*/4SH 1 piece fitting	2"	2"
4SH* 2 piece fitting	2"	2"
SAE R 15* 2 piece fitting	1½"	1½"
Industrial	2"	2"
90° Elbows	1½"	1½"
Max. Crimp range (mm/inch)	82 / 3.23	82 / 3.23
Opening (mm/inch)	+24 / +0.94	+24 / +0.94
Opening without dies (mm/inch)	110 / 4.33	110 / 4.33
Master dies length (mm/inch)	90 / 3.54	90 / 3.54
Type of dies	239 - xx/265	239 - xx/265
Speed (mm/sec)		
Close	Manuell	Manuell
Crimp	0.42	0.42
Open	Manuell	Manuell
Noise level	70 dBA	70 dBA
Drive	0.75 kW 3 VAC	0.75 kW 3 VAC
Oil	2.3 l	2.3 l
L x W x H (mm)	430 x 367 x 682	430 x 367 x 682
Options	77 kg	77 kg
<b>Options</b>		
12 VDC/24 VDC	✓	✓
1 Phase	✓	✓
Control IPC	-	-

Type of dies	
∅ mm	mm
6.8	65
9	65
10	65
12	65
14	65
16	65
17	65
19	65
20	65
22	65
24	65
26	65
28	80
30	80
31	80
32	80
34	80
36	80
38	80
39	80
40	80
44	80
47	100
50	100
54	100
57	100
62	100

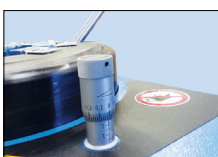
Type of dies	
∅ mm	mm
54	100
57	100
62	100
67	100
71	100
74	100



SH = Hollow piston press tool

\* According to the fitting.  
Packages page 28 / Accessories and options page 56

## Description



The micrometer allows you to easily set the crimping dimensions.



The machine is pre-positioned manually.



The lightest mobile 2"-service crimper. Also available in 12 VDC/24 VDC.



265.2 Turntable